



**INSTITUTIONAL PERSPECTIVE PLAN
(2016-2025)**

**KHOWANG COLLEGE
KHOWANG GHAT**




Principal
Khowang College
Khowang Ghat

**KHOWANG COLLEGE
KHOWANG GHAT
INSTITUTIONAL PERSPECTIVE PLAN (2016-2025)**

The perspective plan (2016-2025) has been framed as quality benchmarks for the institution. In framing it, the mission and vision of the college have been taken into consideration. The quality indicators and the core values envisioned by NAAC have acted as the guiding principles in chalking out this plan. The plan has been framed by IQAC in consultation with the Principal, the faculty and managerial staff. Various suggestions of the stakeholders – Governing Body, student community and parents have been incorporated in due place. Moreover, societal needs and locational advantage haven been taken into consideration in framing this perspective plan.

THE INSTITUTIONAL PERSPECTIVE PLANS ARE AS FOLLOWS:

ACADEMIC PLANS:

Starting of Add-on Certificate course / Diploma Courses keeping in view locational advantage, faculty expertise and societal / national need such as:

- a. Certificate course on Human Rights ;
- b. Creative Writing ;
- c. Certificate Course on Advance Certificate in Desktop Publishing and Application;
- d. Diploma in Computer Application;
- e. Post-graduate Diploma in Information Technology;
- f. Certificate in Computer Financial Accounting (Tally, ERP.9, GST);
- g. Certificate Course in Creative Writing;
- h. Certificate Course on Application of Assamese;
- i. Spoken English Course;
- j. Soft Skill Course;
- k. Certificate Course on Human Rights;
- l. Fundamentals of Entrepreneurship;
- m. Beauty Care Management;
- n. Applied Yoga;
- o. Establishment of Vermicompost Training and Production Centre;
- p. Skill Enhancement Activities by NSS (Special Camp);
- q. Effective Implementation of Mentoring;
- r. Remedial / tutorial classes for slow learners;




Principal
Khowang College
Khowang Ghat

- s. Career counselling programme for career advancement for students;
- t. Focus on experimental learning, participative learning and problem solving methodologies;
- u. Developing smart class rooms and enhancing use of ICT;
- v. Maintaining a transparent, time – bound and efficient grievances Redressal mechanism relating to students (curriculum, teaching learning and evaluation, admission and examination).

RESEARCH PLANS:

- a. Developing library and lab tools for research purposes;
- b. Encouraging faculty for Minor and Major research projects;
- c. Facilitating faculty for pursuit of research degrees, research presentations and publications;
- d. Taking up collaborative programme with different institution and department;
- e. Organizing Seminar / Workshop / Conference on current trends in research and innovations as well as socio – political issues.

INFRASTRUCTURE DEVELOPMENT PLANS:

- a. Construction of Women's Hostel;
- b. Construction of Girl's common room with toilet facilities;
- c. Renovation of Old Boy's Toilet and Girl's Toilet;
- d. Construction of New Boy's Toilet;
- e. Construction of Indoor Stadium;
- f. Construction of Sports Pavilion;
- g. Construction of New Canteen;
- h. Construction of College Boundary Wall;
- i. Tiles fitting in All Classrooms and Office rooms;
- j. Construction of New Cycle Stands for students;
- k. Construction of Toilet for Education Department;
- l. Provide sufficient power supply for College Campus;
- m. All important area of the college campus are under CCTV surveillance;
- n. Establishment of Language Lab with maximum facilities;
- o. Renovation of Computer Lab with maximum facilities;
- p. Establishment of Body fit centre with maximum facilities;
- q. Provide sports facilities and development of playground;
- r. Development of fishery project;
- s. Construction of Conference Hall.



Principal
Khowang College
Khowang Ghat

ADMINISTRATIVE EXCELLENCE PURSUITS:

- a. Optimum decentralization of academic management and support service;
- b. Efficient functioning of all works as per Institutional Organogram;
- c. Development of e-governance system in admission, examination, salary system;
- d. Implementation of Library Software (KOHA);
- e. Mobilizing philanthropic financial support;
- f. Training programme for staff (Teaching and Non-Teaching).

EXTENSION SERVICES PLANS:

- a. Awareness programme on environmental issues, social and public health issues, current issues related to societal problem and civic responsibilities;
- b. Services during emergency (occurring flood, pandemic environment (COVID-19) etc.);
- c. Organizing state level different conference, cultural and sports event.

WELFARE PLANS:

- a. Provision of financial support scheme for students;
- b. Capacity building and skills enhancement initiatives;
- c. Efficient mechanism Students' Grievance Redressal cell;
- d. Felicitation to students for outstanding performance in curricular and co-curricular activities;
- e. Enhancing alumni related activities;
- f. Provision of welfare scheme for staff (Teaching and Non-Teaching).

QUALITY DEVELOPMENT AND INNOVATIVE PLANS:

- a. Conduction of Quality assessment by competent bodies on regular basis;
- b. Establishment of Vermicompost Training and Production Centre;
- c. Utilization of low land area as fishery project;
- d. Establishment of Incubation Centre;
- e. Establishment herbal garden and plantation meditational plant in college campus.

Approved by the Governing Body
meeting, Khowang College, held on 21/10/2016.

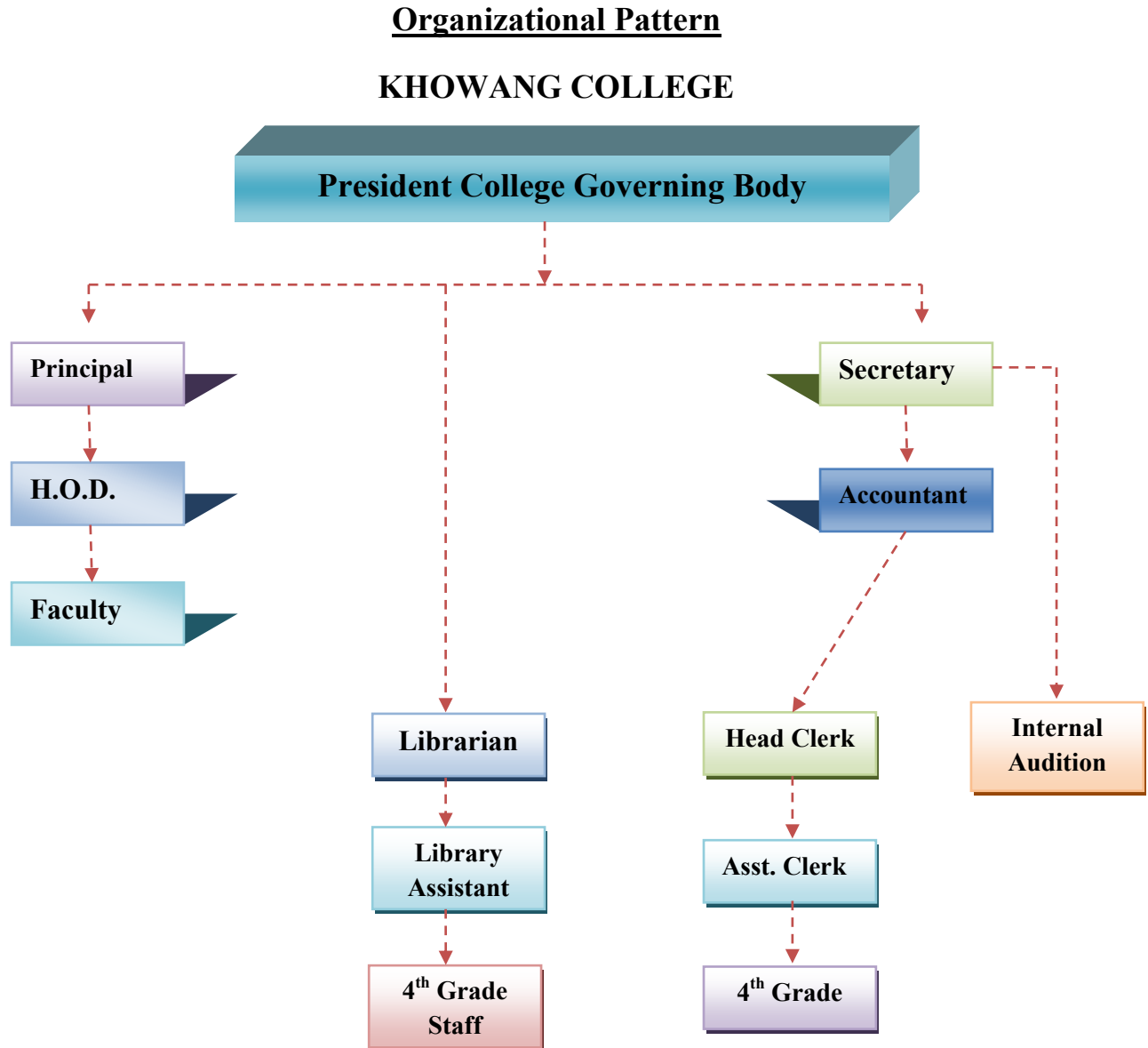


A handwritten signature in blue ink, appearing to be "Aho".

Principal
Khowang College
Khowang Ghat

6. Governance, Leadership and Management

6.2.2. Administrative Set up – Institutional



ACADEMIC ORGANOGRAM

